

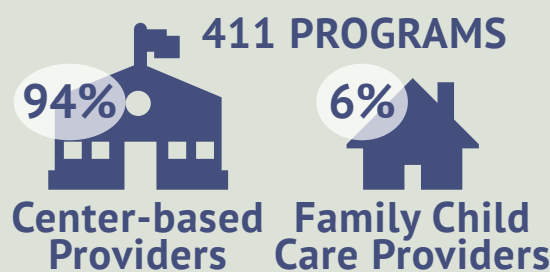
SUMMARY OF EVALUATION FINDINGS

2010 - 2014

BACKGROUND The positive impact of Early Childhood Mental Health Consultation (ECMHC) on children, families, teachers and child care programs has been well established in large-scale evaluations in many states. Findings from rigorous studies (i.e., random- controlled experiments, quasi-experimental and mixed methods studies) underscore that access to ECMHC reduces serious problems that undermine school readiness in American children. Children's social and emotional capacity is strongly linked to school readiness.

There are 3 forms of mental health consultation provided by Smart Support: Child-Focused; Classroom-Focused; and Program-Focused. These 3 forms of consultation are often delivered concurrently. Smart Support provides intensive weekly services by highly qualified, masters-level consultants.

EVALUATION PARTICIPANTS



METHODOLOGY

The data was collected at Baseline; 6 months of Smart Support; 12 months of Smart Support.



OUTCOMES (Statistically significant findings)



Improved classroom emotional climate



Increases in teacher knowledge of social and emotional development



Teacher-Child Relationships:

- Closeness increased
- Conflict decreased



Prevention of child expulsion



Increased teacher confidence in ability to deal effectively with challenging behavior



Increases in children's self-regulation